

ENTOMOLOGY

CORNELL COOPERATIVE EXTENSION



Integrated Management of Flies in and around Dairy and Livestock Barns

D. Wes Watson, J. Keith Waldron, and Donald A. Rutz

Department of Entomology, New York State IPM Program, Cornell University

Introduction

In the past, management of flies in dairy and livestock barns often relied solely on insecticide use. But this single-tactic approach can aggravate fly populations' resistance to insecticides and inadvertently destroy natural enemies of flies. Today successful farmers are combining careful use of pesticides with other integrated pest management (IPM) practices.

Figures 1 and 3 are from *Flies and Disease*, vol. 1, 1971, by Bernard Greenberg, published by Princeton University Press. Franticek Gregor, artist. Reprinted by permission.

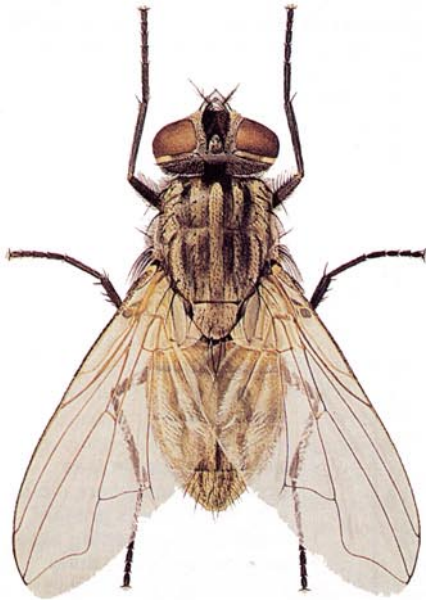


Fig. 1.



Fig. 2.

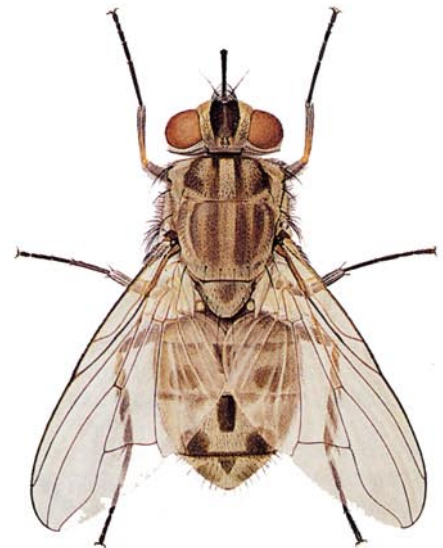


Fig. 3.



Fig. 4.



Fig. 5.



Fig. 6.



Fig. 7.



Fig. 8.



Fig. 9.

